



# Ground Power

Central VA Chapter, Armor Modeling & Preservation Society | John Robinson, Editor | Volume 28 No.6

## INSIDE THIS ISSUE

Headlines ..... 1  
 Demo: Making Weld Lines ..... 2-4  
 AMPS Membership ..... 5  
 Upcoming Shows/Events ..... 6-7  
 AMPS-CV Workbench ..... 8  
 Member Projects ..... 9-20  
 Quartermaster ..... 21

## UPCOMING CHAPTER EVENTS

<b>JUN 23</b>	Friday pm MEETING: VFW Post 10657 DEMO: Products from VMS by Tabb Tharrington
<b>JUL 28</b>	Friday pm MEETING: VFW Post 10657 DEMO: TBD
<b>JUL 29</b>	Saturday am/pm MODEL BUILDING DAY 9:00 am - 6:00 pm VFW Post 10657
<b>AUG 18</b>	Friday pm MEETING: VFW Post 10657 DEMO: TBD

## MEETING AGENDA

*(segments vary in length)*

- 6:30 OPENING REMARKS, BUSINESS
- DEMONSTRATION (~30 min.)
- PASS IN REVIEW (~90 min.)

## LOCATION

VFW Post 10657  
11568 Cedar Lane  
Ashland, VA 23005

## PRE-MEETING DINNER



Casa Grande at 5:15 p.m.  
10120 Brook Rd  
Glen Allen, VA 23059

## AMPS South newsletter monthly update

Updates on the AMPS front, by AMPS South VP Ed Ingersol [can be downloaded here.](#)

## AMPS-CV Model Building Days

The next model building day on the schedule is Saturday, July 29 and the following one is September 23. Hours are from 9:00 a.m. to 6:00 p.m. Location is VFW Post 10657.

## AMPS-CV Meeting Change In August

Note there is a schedule change in August due to a conflict at the VFW Post. Our meeting will be on Friday, **August 18.**

## Americans in Wartime Experience

The 2023 Open House is August 26 & 27. [Find out more here.](#)

## Insider access to Fort Lee's Ordnance School

Spencer Van Gils is a volunteer at Fort Lee in Petersburg, VA. If you want to access to the research library there, contact Spencer by finding him on the AMPS-CV Facebook page [or by email.](#) If you don't have a military ID you will have to submit to a security check before you arrive. It is best to visit on weekdays and buddying up a few in one car makes it easier to access the base.



## Last Month's Demonstration: Making Weld Lines Using Slater's Rod

by Scott Bregi

One of the simpler ways to improve a model's detail and accuracy is to add weld lines. Welds are common and prevalent on nearly all armored vehicles from all eras. The following is Scott's method that he learned back in the 1980s but it still survives the test of time.

This technique is best for the welds found on smaller vehicle fittings or in panel corners. Check your references - the rough and thick welds of WW2 Soviet armor would require a different technique.

### Materials

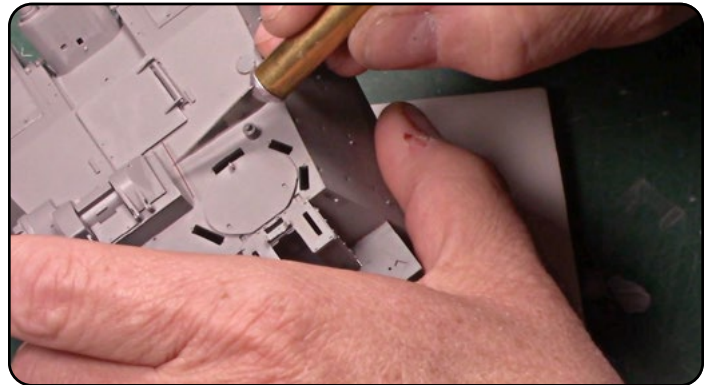
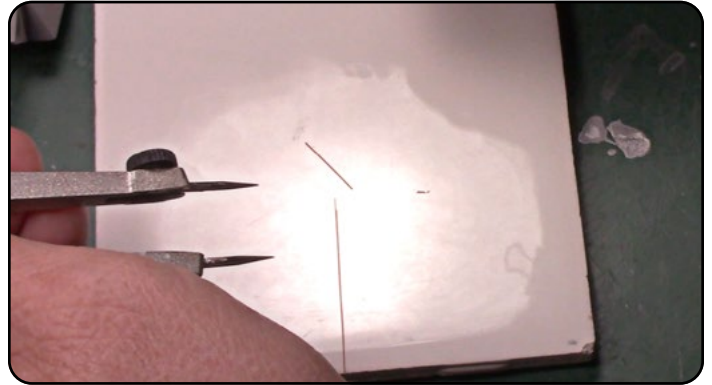
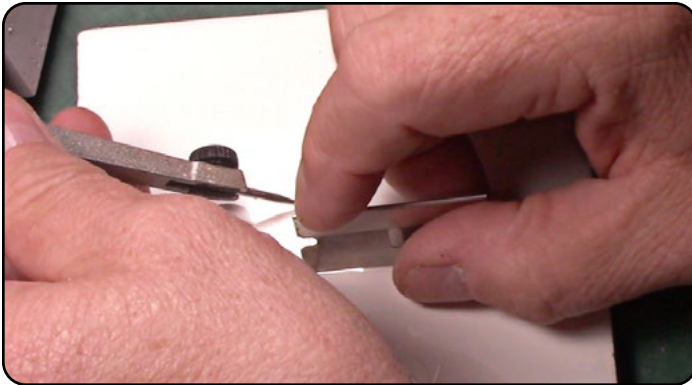
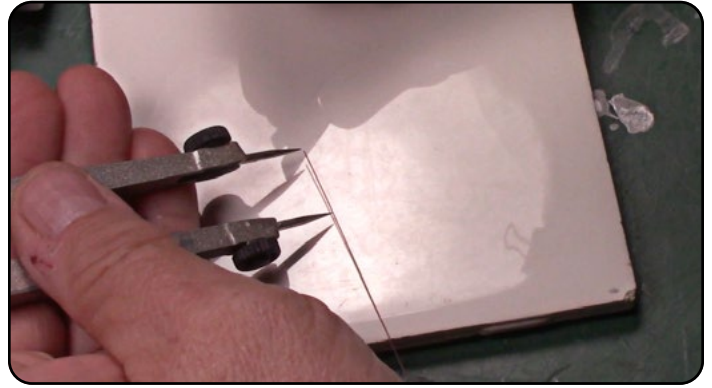
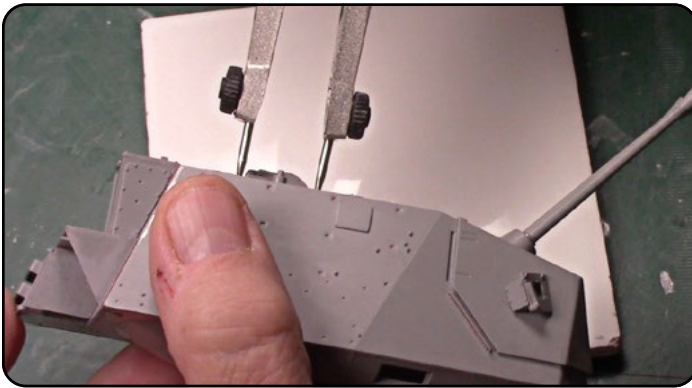
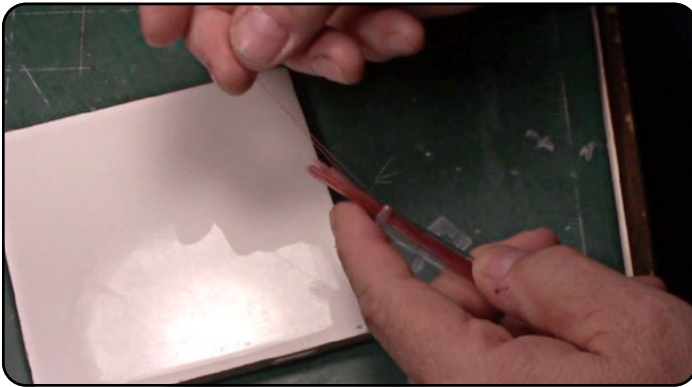
- [Slater's Plastikard Rod](#) in .010" diameter
- Divider, for transferring measurements from the model to the rod. Scott prefers a model from [Weems & Plath](#) because it has a locking wheel.
- Brand-new single-edge razor blade
- Precision Tweezers
- Hard surface for precise cutting
- Tamiya Extra Thin liquid cement OR Tamiya Airbrush Cleaner
- Tamiya Extra Thin Quick-Setting liquid cement

### Technique

- Use the dividers to measure the length of the weld you need. You can also use a good ruler but the divider is faster.
- Cut the Slater's rod to the dimension you found by using the dividers. Cut on a hard surface with a new blade to make a clean cut without distortion. Beware that small pieces of rod may fly off after the cut breaks if you don't hold it down.
- Loosen the cap on the Quick-Setting liquid cement and then pick up the rod segment using tweezers. Use your other hand to transfer a small amount of liquid cement to the location on the model where the weld belongs.
- Immediately place the rod segment on the location wet with cement. The cement will dry in a few seconds so make sure the rod is aligned.
- After about 15 seconds or so, switch to the Extra Thin (standard set) and flood the rod with a moderate amount of cement, but not excessive. If capillary action doesn't wick the cement down the entire length of the rod, touch the dry sections with more cement. Keep a fine-tipped knife blade handy to push the rod into place, but do not do anything else to the rod. As the cement reacts with the rod it will melt and distort it in a way that mimics the look of a weld bead in real life.
- If desired, reapply liquid cement after a minute or so. It should not need any more than that.
- Apply multiple rods if that matches your references, just be careful not to apply too much cement.
- Curl the rod by gently drawing it across a sharp edge. Use this rod for curved or circular-shaped welds.
- Putting a weld on a flat panel can be done by scribing a groove first. Apply the rod as you would normally.



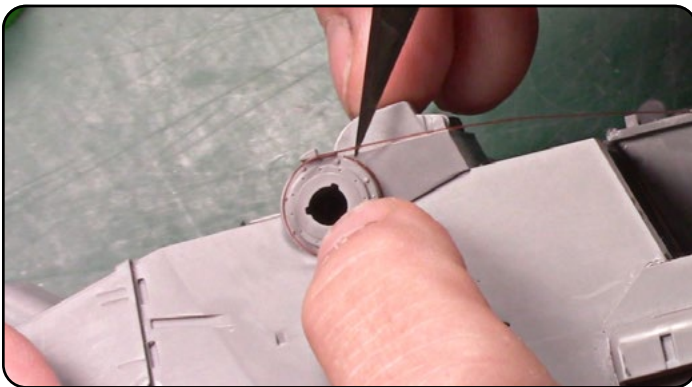
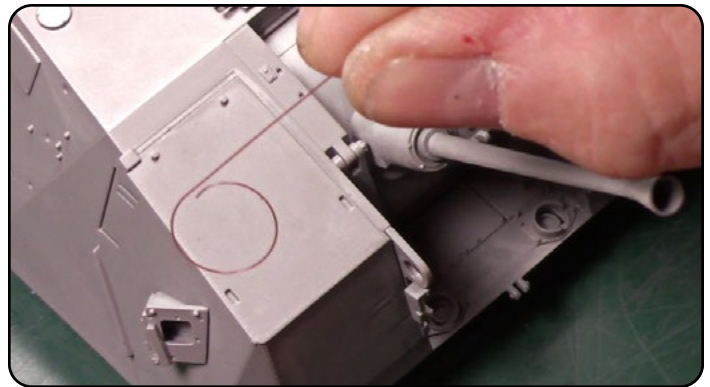
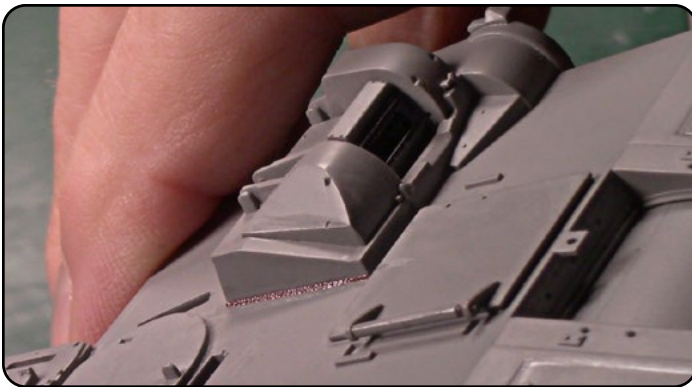
Continued on next page...



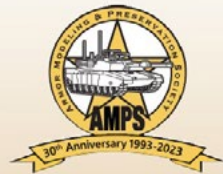
1. Scott keeps his Slaters rod in a tube to prevent damage.
3. Use dividers to measure the space that needs a weld.
5. Use a single-edge razor blade for perfect cuts.
7. Tamiya Extra Thin Quick-Set for tacking the rod.

2. Cut on a hard surface to avoid distorting the rod.
4. Transfer the dimension to the rod.
6. Cutting result.
8. Place the rod in place.

*Continued on next page...*



1. Position the rod and push it into the wet plastic.
2. Apply Tamiya Extra Thin liberally without brushing.
3. Check the placement again and push out any bulges.
4. Apply a second coat of cement. No more than three is sufficient.
5. Results after a few minutes of drying.
6. Curl the rod for applying around curved objects.
7. Tack as before, position and apply more cement.
8. Final result.



**2023 International Convention Report • Skill Level Promotions & Masters Honor Roll • Complete Medal Winners Listing • Show Season & Vendors • Local Chapter News & Upcoming Shows**

**Boresight May/June 2023**

- AMPS 2023 Int'l Convention Report by Peter Espada
- Skill Level Promotions and AMPS Masters Honor Roll
- Best ofs and Special Awards
- 2023 Medal Winners at the 2023 Int'l Convention
- Show Season & Vendors by John Rauscher
- Local Chapter News & Upcoming Shows

	1 year	2 years	3 years
USA	\$30	\$55	\$80
Canada/Mexico	\$35	\$65	\$95
International	\$40	\$75	\$110
Junior*	\$15	\$30	\$45
Family**	\$15	\$10	\$15
Digital***	\$25	\$45	\$65

\* Juniors: members aged 17 years or younger.  
 \*\* Family: active regular members living at the same address.  
 \*\*\* Available to International members living outside North America.

Membership includes the society's Boresight magazine that is published six times per year. In it are exclusive articles about armor research and modeling.

**Renew or start your AMPS membership online at: [www.amps-armor.org](http://www.amps-armor.org)**

PayPal, Visa and MasterCard accepted

To pay by check or money order, enter your delivery information at right and mail it with your payment to:

**AMPS Membership**  
 PO Box 807  
 Thorn Run Rd.  
 Moon Township, PA  
 15108-9998  
 USA

Name: \_\_\_\_\_

Address: \_\_\_\_\_

City: \_\_\_\_\_

Zip Code: \_\_\_\_\_

State: \_\_\_\_\_

Country: \_\_\_\_\_

Email: \_\_\_\_\_



# ARMORCON

Friday and Saturday October 13th and 14th , 2023

Wyndham Southbury, 1284 Strongtown Rd., Southbury CT 06488  
\$129 discount room rates available. Please call 203-653-8179 and ask  
for the Armorcon room block. Make reservations by 9/7/23.

**WINNING MODELS FROM AMPS CAN BE ENTERED AT ARMORCON!**

**80 VENDOR TABLES!**

**AMPS OPEN JUDGING SYSTEM! HUGE RAFFLE WITH GREAT PRIZES!**

**RESEARCH, MODELING, AND WORKSHOP SEMINARS!**

**18 ENTRY CATEGORIES! 20 SPECIAL AWARDS!**

**Friday 11:00 AM to 7:00 PM Saturday 9:00 AM to 4:00 PM**

**OUR 23rd YEAR!**

**SHOW THEME – Lend-Lease**

Check our website for registration forms, schedule times, seminar times,  
and other information. [www.nemilmod.org](http://www.nemilmod.org)

Brought to you by the **Northeast Military Modelers Association**  
An AMPS Regional Show



## For Vendor Table Reservation

Matt Toms  
68 Morris Street  
Naugatuck, CT 06770  
203 729-3218  
[vendors@mail.nemilmod.org](mailto:vendors@mail.nemilmod.org)

## For More Information

[www.facebook.com/armorcon](https://www.facebook.com/armorcon)  
[www.nemilmod.org](http://www.nemilmod.org)

## 2023

AMPS-CV monthly meetings occur on the 4th Friday

	S	M	T	W	Th	F	S	
<b>JANUARY</b>	01	02	03	04	05	06	07	
	08	09	10	11	12	13	14	
	15	16	17	18	19	20	21	
AMPS-CV Meeting	22	23	24	25	26	27	28	AMPS-CV Build Day, VFW Post
<b>FEBRUARY</b>	29	30	31	01	02	03	04	
	05	06	07	08	09	10	11	
AMPS-CV Meeting	12	13	14	15	16	17	18	
	19	20	21	22	23	24	25	Old Dominion Open, Richmond, VA
<b>MARCH</b>	26	27	28	01	02	03	04	
	05	06	07	08	09	10	11	AMPS-CV Modeler's Retreat, Fort A.P. Hill, VA
	12	13	14	15	16	17	18	
AMPS-CV Meeting	19	20	21	22	23	24	25	
<b>APRIL</b>	26	27	28	29	30	31	01	
	02	03	04	05	06	07	08	
	09	10	11	12	13	14	15	
	16	17	18	19	20	21	22	
AMPS-CV Meeting	23	24	25	26	27	28	29	
<b>MAY</b>	30	01	02	03	04	05	06	AMPS International Convention, Camp Hill, PA
	07	08	09	10	11	12	13	
	14	15	16	17	18	19	20	
AMPS-CV Meeting	21	22	23	24	25	26	27	
<b>JUNE</b>	28	29	30	31	01	02	03	
	04	05	06	07	08	09	10	
	11	12	13	14	15	16	17	AMPS-CV Build Day, VFW Post
AMPS-CV Meeting	18	19	20	21	22	23	24	
<b>JULY</b>	25	26	27	28	29	30	01	
	02	03	04	05	06	07	08	
	09	10	11	12	13	14	15	
	16	17	18	19	20	21	22	
AMPS-CV Meeting	23	24	25	26	27	28	29	AMPS-CV Build Day, VFW Post
<b>AUGUST</b>	30	31	01	02	03	04	05	
	06	07	08	09	10	11	12	
AMPS-CV Meeting	13	14	15	16	17	18	19	
	20	21	22	23	24	25	26	
<b>SEPTEMBER</b>	27	28	29	30	31	01	02	
	03	04	05	06	07	08	09	
	10	11	12	13	14	15	16	
AMPS-CV Meeting	17	18	19	20	21	22	23	AMPS-CV Build Day, VFW Post
	24	25	26	27	28	29	30	
<b>OCTOBER</b>	01	02	03	04	05	06	07	
	08	09	10	11	12	13	14	ArmorCon, Southbury, CT
	15	16	17	18	19	20	21	
AMPS-CV Meeting	22	23	24	25	26	27	28	
<b>NOVEMBER</b>	29	30	31	01	02	03	04	
	05	06	07	08	09	10	11	
	12	13	14	15	16	17	18	
AMPS-CV Meeting	19	20	21	22	23	24	25	AMPS-CV Build Day/Meeting (FRI), Build Day (SAT), VFW Post
<b>DECEMBER</b>	26	27	28	29	30	01	02	
	03	04	05	06	07	08	09	
	10	11	12	13	14	15	16	
	17	18	19	20	21	22	23	
AMPS-CV Meeting	24	25	26	27	28	29	30	
<b>JANUARY</b>	31	01	02	03	04	05	06	

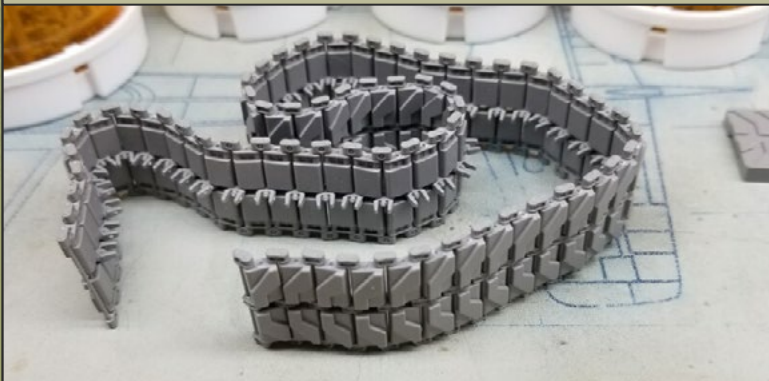


# AMPS-CV Workbench Photos



Takom US M103A1  
in 1:35 scale  
by Glen Martin

Glen's inbox review is on the [AMPS website](#).







**Flyhawk German Panzer II  
Ausf. L Luchs  
in 1:72 scale  
by Ashley Abernathy**

As a finishing touch, Ashley added the kit's plastic command antenna because the photo-etched brass one was broken while attempting to clean it up. Width indicator poles are wire with CA glue balls on top. The markings are decals from the

kit. The base is a resin one from HQ72 but trimmed slightly to fit a more compact scene and glued to an old award plaque. The groundwork is random natural materials glued down with matte medium, and the trees are homemade from twigs and leaves.



## Pass and Review from May



**Dragon German Sd.Kfz. 232**  
in 1:72 scale  
by Ashley Abernathy

The kit's suspension is fully detailed. It was painted with Tamiya acrylics. The exhaust was treated with four layers of rust from Lifecolor's Dust & Rust Set. The darkest rust color was applied as a base, and subsequent lighter colors stippled on with less intensity at each layer. Tarps and soft stowage is

made from Knead-a-tite putty, including straps. The markings are decals from the kit. The number plates were assembled from individual numbers. Stowage was added behind the frontal spaced armor. Different shades of green were applied by sponge to simulate paint scuffing.



## Pass and Review from May



**Ammo Soviet T-54B**  
in 1:72 scale  
by Ashley Abernathy

The kit is well-detailed, includes photo-etched brass parts and link and length tracks. A jig is provide to help shape the front light guards. Fuel tank connectors

were made with insulated wire. Tarps and soft stowage is made from Knead-a-tite putty, including straps.





Meng Russian BMPT Terminator  
in 1:35 scale  
by Chip Huesinger

Overall a nice kit featuring hard plastic separate link track, similar to 3D printed ones. An array of photo-etched brass parts are also included.





Meng US M1A2 SEP TUSK II Abrams  
in 1:35 scale  
by Chip Huesinger

Chip treated the horizontal surfaces with Ammo's Anti Slip Paste and the model was weathered using the Ammo US Modern Vehicles Enamels and Pigments set. The kit track joints melted under the enamel wash,

but a replacement AFV Club track set made the rescue. Masking fluid was applied to the clear parts before painting, but some of it proved difficult to remove and caused breakage on the M240 MG mount.



## Pass and Review from May



Das Werk German Panzer III Ausf. J  
in 1:16 scale  
by David Hochheimer

Kit options include three sub-variants of the J and provided are two different gun barrels, two sets of workable tracks and six different vehicle marking sets. Different tool suites and locations depend on the variant chosen, but the mounting hardware is molded on. Molding quality on the kit is

near perfect. Dave painted it with Tamiya Panzer Grey. The tool handles were first painted Tamiya Deck Tan and treated with Ammo Oil Brushes before wiping off the excess.



Pass and Review from May



Meng German Leopard 1A4 (Greece)  
in 1:35 scale  
by David Hochheimer

Meng provides unique parts to make the Greek version and optional individual link or single-piece soft styrene tracks. Dave is using Silly Putty to create the hard-edge camouflage pattern.



## Pass and Review from May



**Academy German JagdPanther G1**  
in 1:35 scale  
by Glen Martin

Since the last meeting, Glen added the Schurzen armor on the hull sides but had to construct new attachment brackets in order for it to fit properly. They were

splattered with a mixture of Ivory Black and brown oil paint. The gun barrel was weathered with streaks of Unbleached Titanium, white and black oil paints.







**Tamiya Soviet BT-7**

**in 1:35 scale**

**by John Robinson**

The kit has excellent fit and requires only a tiny amount of cleanup. The large, front fenders were removed to mimic the

battered vehicles from period photos. The kit tracks are link and length but replaced with Masterclub workable metal tracks, which were a pain due to the microscopic separate pins and the links not fitting together easily. Minor details added are the driver's hatch spring, wing nuts on

the engine deck, weld lines at the front hull, and cast texture on the front axles. The shovels were molded as one piece, but were cut apart. Mounting bolts for the spare track were added to the rear fenders. Bolt heads were added to the rear drive housings.



## Pass and Review from May



### Dragon US M48A2 Patton in 1:35 scale by John Robinson

This was a long journey that began with the Dragon Magach 1/2 kit. It is supposed to build either an M48A1 or M48A2. However, not all the correct parts are included and the instructions are not clear on A2 differences. On the kit itself, the A2 fenders were cut apart and alternate parts grafted in. More accurate wheels from DEF Model were used, along with AFV Club separate link track. Mud chute holes were added to the drive sprocket. Cast texture enhancing

was applied to the turret and hull, along with missing weld lines. MJ Miniatures footman loops were added to the turret and engine deck. A missing horn was found in a Revell M48A2 kit. The turret's bustle rack and side railings were made from .015" styrene rod and strip. The gun barrel is a metal one from Voyager. The mantlet is a resin piece from Legend, which required the removal of the entire turret front. The commander's cupola was detailed with additional rivets, Tasca barrel, lift rings and a new cover made from Aves putty. The jerry cans are from Tasca and the holders are from D-Vision Miniature. The General

Steel casting mark is from Archer Fine Transfers. The loader's hatch was detailed with new springs and a lock hasp. The vehicle number is a Revell decal. The rest of the markings are made from using Lion Roar stencils. The stars were sprayed directly using the stencils, and the unit numbers on the glacis were sprayed onto clear decal film first. The yellow markings were custom made from tape masks, including the tank silhouette. Vallejo Model Air paints were used and it was weathered with Humbrol enamels, oil paints and pigments.





**Horizon Models US PGM-11 Redstone**

**in 1:72 scale**

**by Scott Bregi**

This kit is accurate straight from the box so no additions or modifications were made. It was base painted with AK-Interactive's Real Color Olive Drab, shaded with Tamiya XF-62 Olive Drab and highlighted with Mission Models Faded Olive Drab. The base was painted FS34079 Forest Green.

## Pass and Review from May



**Tamiya Soviet KV-1**  
in 1:35 scale  
by Steve Fitton

Steve said this kit is far better than the older, Trumpeter version. Fit and finish was very good, although an inner bulkhead contributed to a initial misalignment of the engine deck. The link and length tracks were upgraded to separate link Tankraft 3D printed tracks. They were a joy to assemble and install, and the pins enabled easy access for painting off the model. Steve

drilled out the tiny lifting ring posts on the engine deck and upgraded the barrel to a DEF Model metal one with internal rifling. The 4B0 green shade is from Mission Models and was sealed with Testors Clear. The kit's decals melted slightly under a fresh bottle of Solvaset but were touched up by hand with white paint.





## AMPS-CV Quartermaster

This page is dedicated to member-recommended products and places to purchase hobby products.

If you have a company you want to add to this list, contact your editor [via the chapter website](#).

### Product Manufacturers

---

[Abteilung 502](#)  
[AK-Interactive](#)  
[Alliance ModelWorks](#)  
[AMMO of Mig Jimenez](#)  
[Archer Fine Transfers](#)  
[Armand Bayardi](#)  
[Badger Airbrush](#)  
[Bolddivision](#)  
[Copper State Models](#)  
[D-Day Miniature Studio](#)  
[DN Models](#)  
[Echalon Fine Details](#)  
[Elefant Corporation](#)  
[Eureka XXL](#)  
[GasPatch Models](#)  
[Hauler](#)  
[Heavy Hobby](#)  
[Live Resin](#)  
[Maus Werx](#)  
[Mission Models Paints](#)  
[MJ Miniatures](#)  
[Modern Masters Metal Effects](#)  
[Monroe Perdu Studios](#)  
[Panzer Art](#)  
[Paracel Miniatures](#)  
[Precision Ice and Snow](#)  
[RB Model](#)  
[ResinScales](#)  
[Roch Model](#)  
[Scenic Express](#)  
[Slater Plastikard](#)  
[Squadron Hobbies](#)  
[Star Decals](#)  
[Syren Ship Model](#)  
[Track48](#)  
[Valkyrie Miniature](#)  
[Woodland Scenics](#)

### Miscellaneous

---

[paintRack](#) (mobile app for Android)  
[Scale Mates](#)

### Hobby Vendors

---

[Barrel Store](#)  
[BNA Model World](#)  
[Central Tools](#)  
[Dick Blick Art Materials](#)  
[Frontline Model Kits & Hobbies](#)  
[Gundam Planet](#)  
[Hobby Easy](#)  
[Hobby Search](#)  
[HobbyLink Japan](#)  
[HobbyWorld-USA](#)  
[Last Cavalry](#)  
[Lots of Models](#)  
[Lucky Model](#)  
[MicroWorld Games, LLC](#)  
[MMC Design-Shapeways](#)  
[Shapeways 3D Parts](#)  
[Sprue Brothers Models](#)